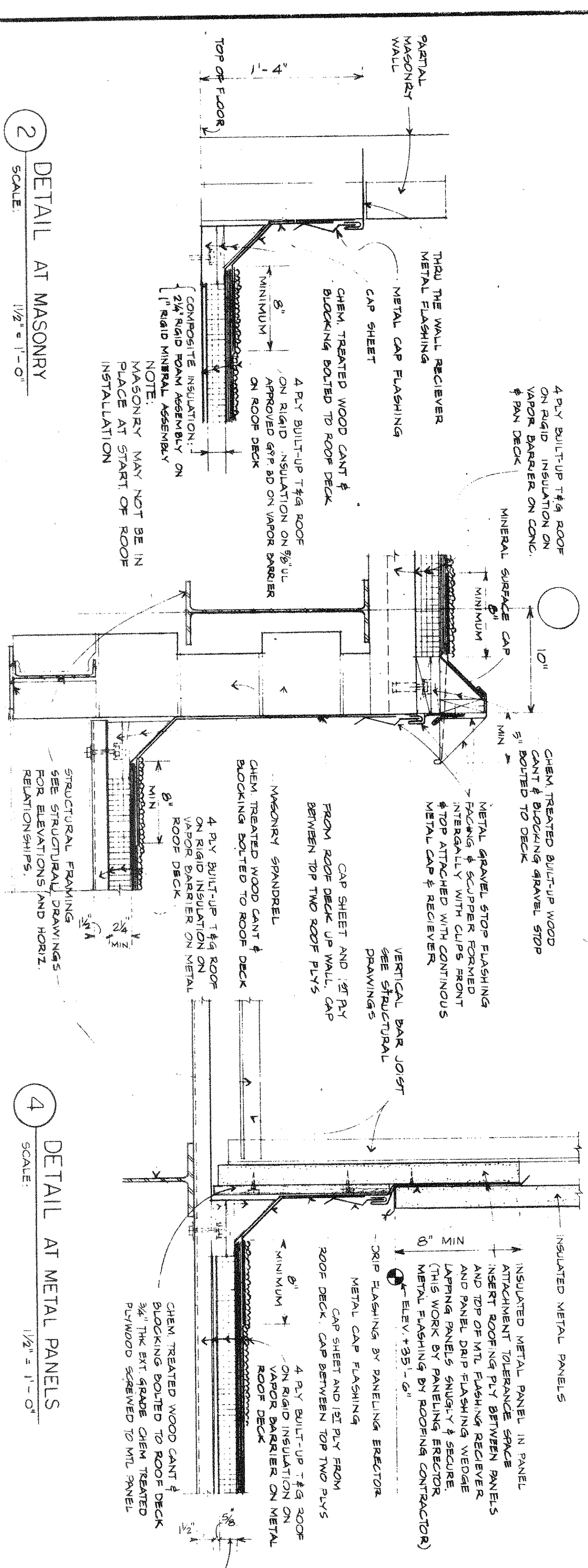


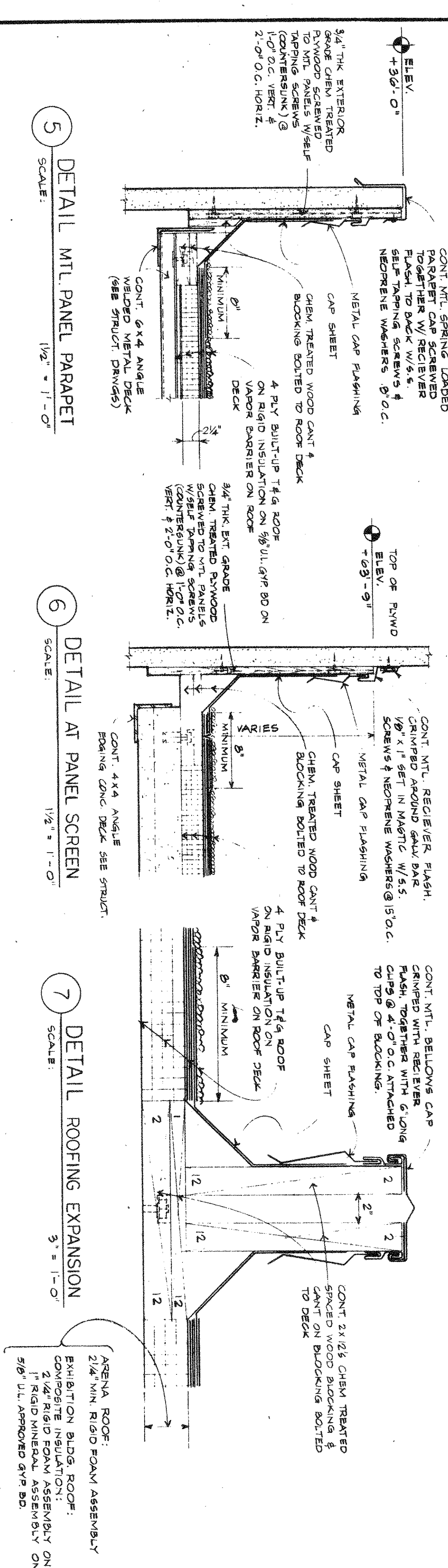
1 DETAIL ARENA PARAPET
SCALE: 1/2" = 1'-0"



2 DETAIL AT MASONRY
SCALE: 1 1/2" = 1' - 0"

3
SCALE: $1\frac{1}{2}" = 1' - 0"$

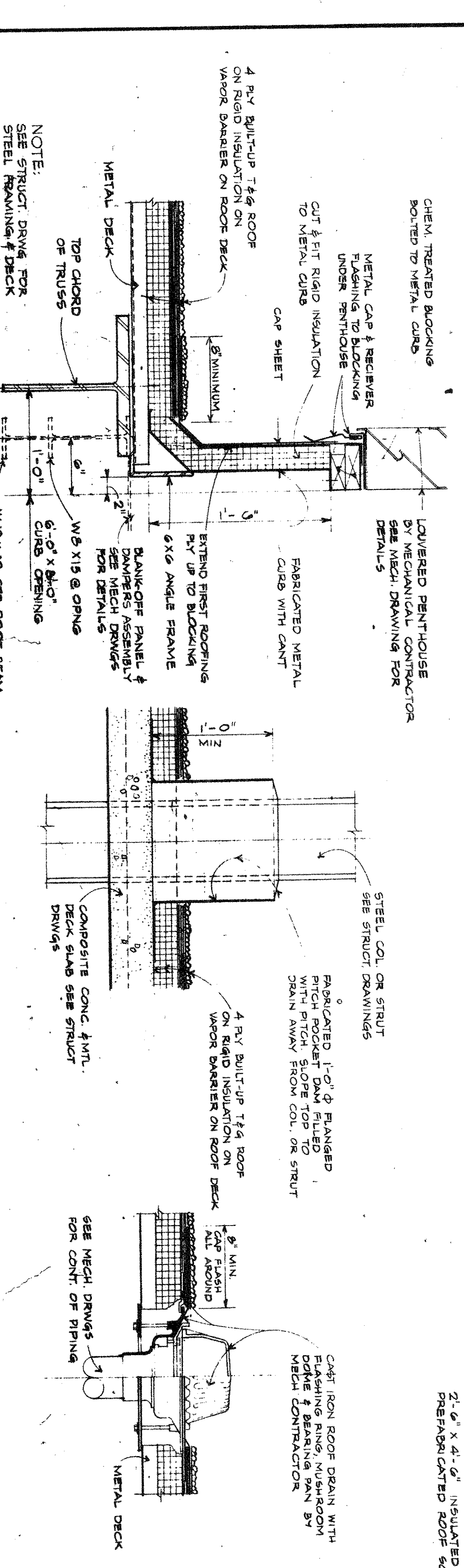
4
SCALE: 1/2" = 1'-0"



5
SCALE: 1/4" = 1' - 0"

6 DETAIL AT PANEL SCREEN
SCALE: 1/2" = 1'-0"

7 DETAIL ROOFING EXPANSION
SCALE: 3" = 1'-0"

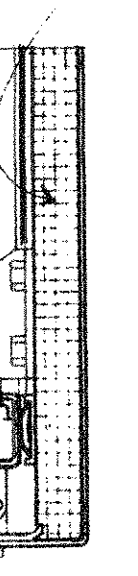


8 DETAIL CURB AT ROOF OPNG
SCALE: 1/2" = 1'-0"

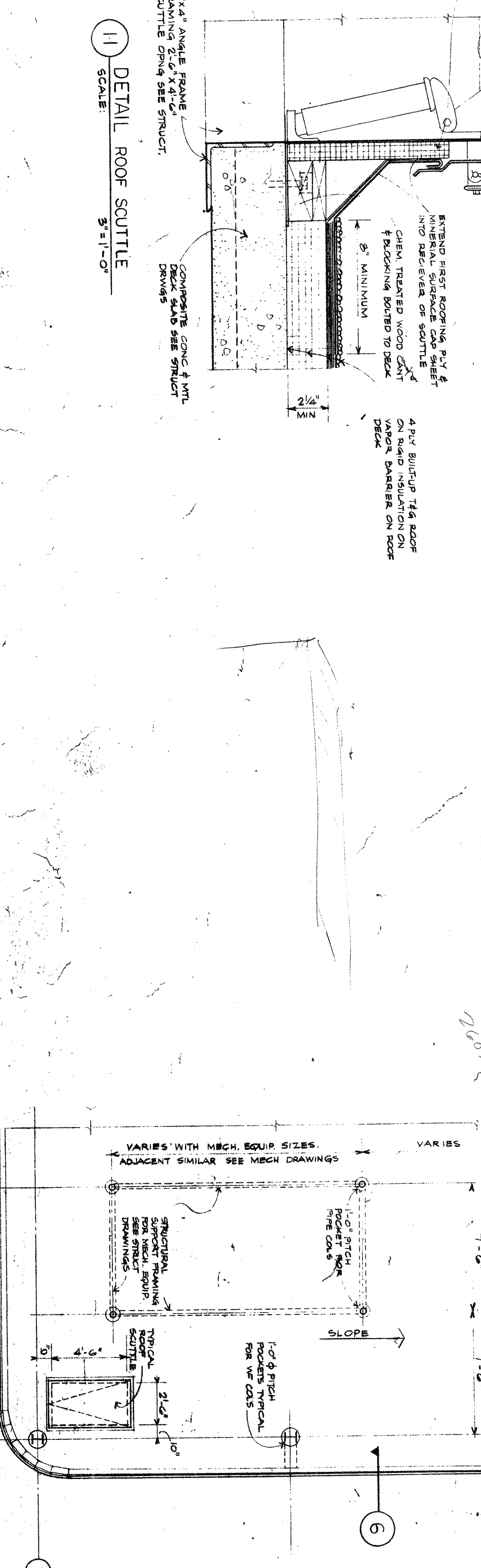
9 DETAIL PITCH POCKET
SCALE: $1\frac{1}{2}" = 1' - 0"$

10
SCALE: 1 1/2" = 1'-0"

DETAIL ROOF SCUTTLE
SCALE: 3" = 1'-0"



12 ROOF PLAN
SCALE: 1/8" = 1'-0"
DRAWING NORTH




13 PARTIAL ROOF PLAN

[illegible]

GENESIS CENTER
ADAMS, BROADWAY, AND FIFTH AVENUE
CITY OF GARY, INDIANA
RICHARD G. HATCHER, MAYOR

Wendell Campbell Associates, Inc.
ARCHITECTS
504 BROADWAY GARY, INDIANA
2006 E. 140TH STREET EAST CHICAGO, INDIANA
180 N. MICHIGAN AVENUE CHICAGO, ILLINOIS



DATE	JAN. 2, 1980
APPROVED	
CHECKED	
DRAWN	REW. T

CONTENTS

ROOF PLAN
AND DETAILS

